



**New Enterprise Stone & Lime Co., Inc.**

## **Project Spotlight**

**Premium Mix**

**Scaling Resistant Concrete**

### **Mountain View Elementary School**

***Year Installed***

2018

***Location***

Fort Loudon, PA

***Contractor***

Roy E. Rummel Concrete Construction

***Concrete Producer***

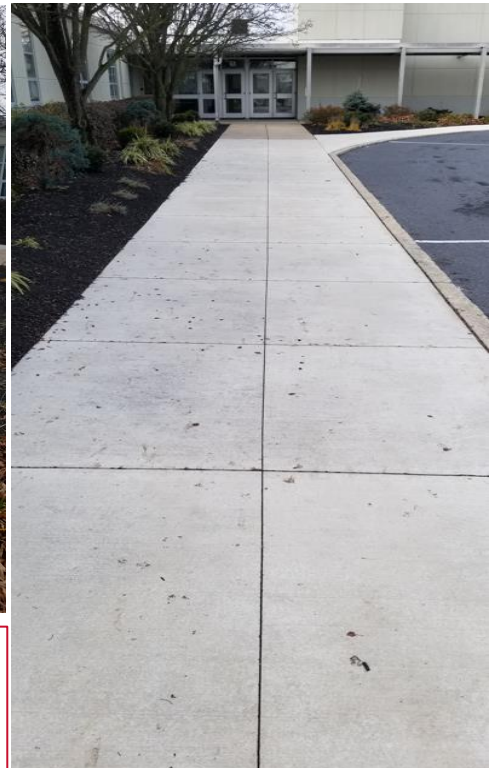
New Enterprise Stone & Lime Co., Inc.

***Concrete Volume***

30 cubic yards

***Application***

Sidwalks



***Altoona Sales Area - Adrian "Ace" Snyder – 814.330.2425***

***Harrisburg & Chambersburg Sales Area – Scott Eichelberger – 717.729.1816***

***Lancaster Sales Area – Darryl Keiser – 717.286.5894***

***Allentown Sales Area – Clint Renninger – 484.256.8343***

## **What is the Premium Mix?**

A specially formulated concrete mix developed by New Enterprise Stone & Lime, Co., Inc. (NESL) to resist scaling, provide superior finishing, and reduce efflorescence.

## **When was the Premium Mix developed?**

The Premium Mix was developed in 2013 with the first project being the Dry Run Independent Baptist Church in Duncansville, PA. Since that time, it has been used successfully in over 120 projects.

## **How does the Premium Mix respond to deicing chemicals?**

While the Premium Mix was designed to combat deicer scaling in the NESL service area, some deicer chemicals should be avoided. Salt is preferred, with calcium chloride being acceptable. Magnesium chloride, fertilizer, or more exotic deicing chemicals should not be used.

## **Can the Premium Mix be used with colored concrete?**

Because of aesthetic concerns related to scaling in architectural flatwork, the Premium Mix is routinely supplied for color broomed or color stamped concrete.

## **What concreting practices are recommended for the Premium Mix?**

- ❖ Place concrete at maximum 6" slump.
- ❖ Concrete should be floated and broomed; steel troweling should be avoided.
- ❖ Spraying or "blessing" water on the surface must be avoided.
- ❖ Concrete must be cured. A high solids curing compound or wet curing is strongly recommended.
- ❖ Place concrete between April 15<sup>th</sup> and October 15<sup>th</sup>.

## **Is the Premium Mix foolproof?**

While certainly an innovative technology, poor concrete practices and harsh deicing chemicals can negate the special properties of the Premium Mix.

## **Any suggestions for concrete that will be exposed to extreme amounts of deicing chemicals?**

The combination of the Premium Mix and a surface applied penetrating sealer has been used successfully in several applications where severe deicing occurs. Contact your local NESL representative for additional information on this combination protection system.



New Enterprise Stone & Lime Co., Inc.