



New Enterprise Stone & Lime Co., Inc.

Project Spotlight

MasterFiber® MAC 360FF

Macrosynthetic Fiber

Robotic Milking Barn

Location

Gap, PA

Contractor

ELS Concrete Construction

Concrete Producer

New Enterprise Stone & Lime Co., Inc.

Concrete Volume

70 cubic yards

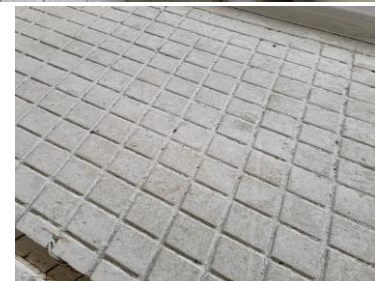
Fiber Dosage

3 lbs./cubic yd

Application

Interior Slab

Contractor replaced the welded wire mesh with macro fiber for this interior floor slab.



Altoona Sales Area - Adrian "Ace" Snyder - 814.330.2425
Harrisburg & Chambersburg Sales Area - Scott Eichelberger - 717.729.1816
Lancaster Sales Area - Darryl Keiser - 717.286.5894
Allentown Sales Area - Clint Renninger - 484.256.8343