



New Enterprise Stone & Lime Co., Inc.

Project Spotlight

MasterFiber[®] MAC 360FF

Macrosynthetic Fiber

Location

Stoystown, PA

Contractor

T-Rock Construction, Inc.

Concrete Producer

New Enterprise Stone & Lime Co., Inc.

Concrete Volume

600 cubic yards

Fiber Dosage

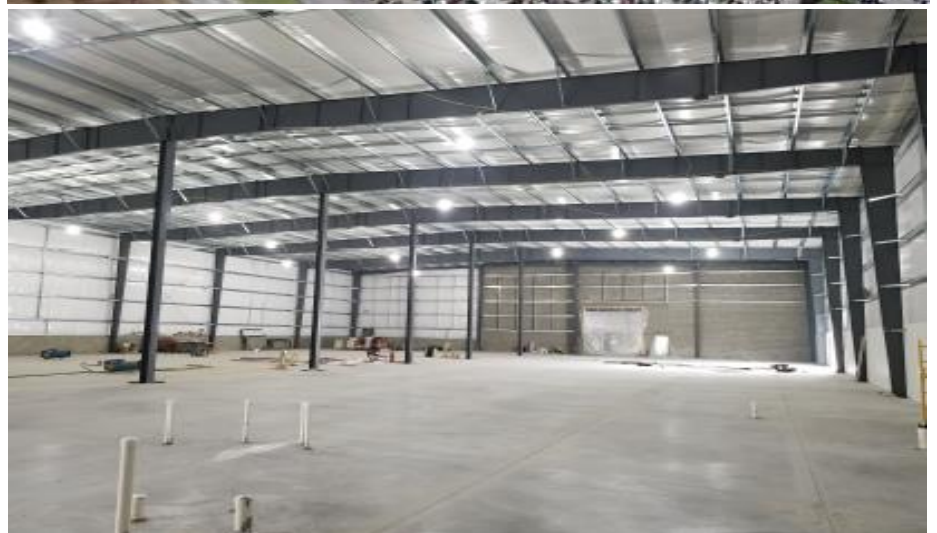
3 lbs./cubic yd

Application

Warehouse Floor

Contractor chose macro fibers over welded wire mesh to speed construction and reduce in-place costs. Approximately 1/3 of the slab included radiant heat.

Stoystown Auto Wreckers Warehouse



Altoona Sales Area - Adrian "Ace" Snyder - 814.330.2425

Harrisburg & Chambersburg Sales Area - Scott Eichelberger - 717.729.1816

Lancaster Sales Area - Darryl Keiser - 717.286.5894

Allentown Sales Area - Clint Renninger - 484.256.8343